



# MICHIGAN LIBERTARIAN

---

NEWS LETTER OF THE LIBERTARIAN PARTY OF MICHIGAN

---

*Michigan Constitution Article I, Sec. 5*

*Every person may freely speak, write, express and publish his views on all subjects, being responsible for the abuse of such right: and no law shall be enacted to restrain or abridge the liberty of speech or of the press.*

NOVEMBER-DECEMBER, 1996

BROWNE POSTS BIG INCREASE FOR LP

CASHMAN, WISNEWSKI WIN

Libertarian Presidential candidate Harry Browne posted the Party's highest vote total since 1980 in the general election on November 5 with 470,818 across the country. This total is 61.5% higher than the 291,612 registered by Andre Marrou in 1992 and is 0.5% of the total.

Browne did even better in Michigan with 27,892 votes (0.7%), up 174% from 1992. Browne's tally also maintained ballot status in Michigan for the LPM with 70% more votes than the 16,343 needed. Michigan produced the third highest Browne vote in the US behind only California and Pennsylvania, the best Michigan finish ever!

The Libertarian Party of Michigan fielded 76 other candidates behind the Browne-Jorgensen ticket, including two winners.

Brett Cashman was elected Superior Township Parks Commissioner in Washtenaw County. He is a 38 year old Technical Support Engineer and the Affiliates Editor of this newsletter. Brett and his wife Kimberly have a daughter, Madison.

Brian Wisnewski won his race for Clinton Township Trustee in Lenawee County. He is a Facilities Management Supervisor. Brian, 37 is married to Ronda and they have two children.

In other races, the LPM continued to show progress. Jerry Kaufman was impressive in

getting 315,794 votes in the non-partisan Supreme Court race or 12.2%, an increase of 51,000 over our 1992 candidate who took just 9%.

Diane Barnes amassed 154,173 votes for the State Board of Education, the highest vote below the winners, with a truly principled race. This is an LPM record for that office surpassing even Mary Ruwart's 93,000 votes in 1992. Mary had the Detroit News' endorsement that year, so Diane's achievement is even more impressive as the News ignored her. Diane may be the top of the ticket in 1998.

In other races, Geoff Foster took 24.1% of the vote for Ypsilanti Twp. Trustee, James Hudler 20.8% for Sylvan Twp. Trustee, Matt Dickinson 20.8% for Hamburg Twp. Trustee, while Dick Whitelock, James Kuhn, Richard Samul, Jeff Terhaar and Russ Smith were all in the 10-15% range. Ken Proctor got 37,514 votes for US Senate, picking up some 10,000 from Perot voters. Bill Hall took 119,492 for U-M Regent, Mike Miller 111,077 for MSU Trustee and Stacy Van Oast 107,457 for Wayne State Governor.

In the ballyhooed 24th District State Rep race, Jon Coon ran a near-perfect campaign with great organization, hard work and good financing, finishing in a near-tie with the Republican, behind the Democrat. This is a Democrat-senior citizen- New Deal type of district, perhaps the toughest kind of all. There was never a real chance to win this one, but it was a professional effort that did Jon, Barb Goushaw and their staff proud. Hats off to them all!

## DIRECTORY

## EXECUTIVE COMMITTEE

|            |                |              |
|------------|----------------|--------------|
| Chair      | Emily Salvette | 313-747-8129 |
| Vice Chair | Mark Owen      | 616-729-1550 |
| Secretary  | Dan Marsh      | 616-456-9472 |
| Treasurer  | Dave Nagy      |              |
| At-large   | Jon Coon       |              |
|            | Keith Edwards  |              |
|            | James Hudler   |              |
|            | Jim McAbee     |              |
|            | Stacy Van Oast |              |

## JUDICIAL COMMITTEE

|                         |                |              |
|-------------------------|----------------|--------------|
|                         | Glenn Barr     |              |
|                         | Bill Hall      |              |
|                         | Tim O'Brien    |              |
| Editor                  | Keith Edwards  | 810-777-7468 |
| Inquiries               | Marnie Edwards |              |
| Membership              | Mark Heil      | 810-468-0509 |
| Speakers                | Keith Edwards  | 810-777-7468 |
| Affiliates Coordinators | Stacy Van Oast |              |
|                         | Jim McAbee     |              |

|  |              |              |
|--|--------------|--------------|
| Campaign Coordinator & Campus Organizing | James Hudler | 313-475-9792 |
| Volunteers                               | Bill Carver  | 810-293-1402 |
| Database                                 | Ben Bachrach | 313-563-1558 |

## LOCAL REPRESENTATIVES:

|   |                 |              |
|---|-----------------|--------------|
| Allegan Co.                               | Rick Dutkiewicz | 616-673-5503 |
| Berrien Co.                               | Scott Beavers   | 616-944-1852 |
| Ionia Co.                                 | Dick Whitelock  | 616-527-9263 |
| Isabella Co.                              | John Tuttle     | 517-866-2365 |
| Kalamazoo/Calhoun                         | Dennis Flatt    | 616-385-3547 |
| Lapeer/Genesee                            | John Hertrich   | 810-724-2038 |
| Lansing area                              | Mike Brinkman   | 517-351-0514 |
| Livingston                                | Doug MacDonald  | 810-231-3137 |
| Macomb Co.                                | Stacy Van Oast  | 810-784-8783 |
| Midland/Bay/Saginaw                       | Russ Burke      | 517-686-8017 |
| Northwest MI                              | Richard Ask     | 616-941-1306 |
| Oakland Co.                               | Don Taube       | 810-745-9118 |
| Ottawa Co.                                | Jeff Terhaar    | 616-847-0581 |
| Shiawassee                                | Ben Steele      | 517-288-5616 |
| South Central (Jackson/Hillsdale/Lenawee) | Tom Slaughter   | 517-787-3650 |
| Washtenaw Co.                             | Geoff Foster    | 313-481-3044 |
| Wayne Co.                                 | Joann Karpinski | 313-925-6917 |
| Western MI                                | Dan Marsh       | 616-456-9472 |
| Upper Peninsula                           | Robert Black    | 906-875-4585 |

Student Organizations are listed on page 8.

## LOCAL MEETINGS

These Libertarian groups meet regularly. See Directory for the contact person.

Ionia meets third Wednesday at Corcoran's Restaurant, downtown Ionia at 7:30 P.M.

Lapeer/Genesee meets the second Wednesday at 7:30 in the Commissioners Room (basement) of Lapeer Co. Bldg, 255 Clay St., Lapeer.

Livingston Co. meets the second Monday at 6:30 at Mexican Jones Restaurant, 675 Grand River, Brighton, and on the fourth Saturday at 10 AM at Elias Brothers on Grand River in Brighton.

Macomb meets the second Wednesday at 6 PM at Fire Escape, 61 N.Walnut, Mt. Clemens.

Mid-Michigan meets the second Thursday at 7 PM at Sneekers, 600 Homer in Lansing.

Northwest LP meets the third Saturday at 7 PM at Cottage Cafe, 420 Munson Ave., Traverse City.

Oakland Co. meets the fourth Tuesday at 7 PM at Gino's Restaurant, 1999 Cass Lake Rd., Keego Harbor.

Ottawa Co. meets the second Tuesday at 7:30 PM at China Garden Restaurant, 133 Washington in Grand Haven.

South Central LP meets the second Monday at Tom's Grill & Pub, 3075 Ann Arbor Rd., in Jackson.

Washtenaw meets every Thursday at 6:30 PM at Sidetrack Bar & Grill, 56 E. Cross St., in Ypsilanti.

Wayne Co. meets the first Tuesday at 6:30 at La Trattoria, 13736 Michigan, Dearborn.

Western MI LP (Grand Rapids area) meets the first Tuesday at 7:30 in the basement of Pizza Hut, 1640 44th St., Kentwood.

## FROM THE CHAIR

By Emily Salvette

This was an incredibly exciting election season for the Libertarian Party of Michigan. We have much to be proud of including retention of ballot status and three wins at the township level. Brett Cashman and Brian Wisneski ran as Libertarians and John Willis, who missed our caucus deadline and ran as a Republican. Watching so many Libertarians pull together to work on so many different fronts confirmed my best hope for this party. The Michigan 16-5 committee for Harry Browne, the Jon Coon for State Rep campaign, the large number of candidates running serious races, the number of volunteers who stepped forward to help wherever needed and the amount of money contributed shows the depth and commitment this party has developed. Even though some of the results were disappointing, we know we put on one hell of an effort to achieve our goals. If we didn't achieve all the success we wanted, it wasn't because we didn't do everything we could. That all-out effort was the most impressive success of the campaign. I thank everyone who helped to make this election season so great: the wonderful candidates, the contributors, the campaign volunteers, and of course, everyone who had the courage to vote Libertarian.

This election shows we are gaining strength as an organization. We have more members than ever before, inquiries are up, speaking engagements are increasing, the number of local groups is growing, and more people are interested in running for office on the Libertarian ticket.

The obvious question is how do we keep building the Party to elect more Libertarians next time. Our wins at the local level underscore the importance of local affiliates. The local groups have a big role to play in targeting strategic races, recruiting good candidates, training them to run, building membership so there is a large campaign volunteer base, and increasing the visibility of the Libertarian Party in the

local area so people are more inclined to vote Libertarian. To everyone who wants to see Libertarian candidates win, my hope is you'll get involved in your local group and help build an organization that can support winning campaigns in your community.

There is much to do right now to get ready for the '98 campaign season. We have the tools we need to succeed: a place on the ballot, committed volunteers, and the best idea going in politics today. Let's get ready to run in '98 by continuing to build the Party from the grass roots up -- we're the only third party doing that. You can help the Libertarian Party succeed in the future by getting involved in your local affiliate today.

---

 WILLIS WINS TOWNSHIP TREASURER POST

Northwest Michigan Libertarian Party activist John Willis was elected Boon Township Treasurer on November 5. (This is in Wexford County.) John missed the Libertarian Party caucus deadline of April 21 and chose to run on the Republican ticket. A traitor, you say? NO way! Even though he ran as a Republican, he proudly proclaimed his Libertarian affiliation. He mailed a campaign piece to registered voters in his district telling them he is a Libertarian and promoting Harry Browne for President. By the way, Browne received 4.5% of the vote in Boon Township--well above the 0.7% average state-wide. "Too bad I had to run as a Republican," John quipped.

---

 L.P.M. RECEIVES GIFT OF BOOKS

The Libertarian Party of Michigan has been given about 170 books by Jackie Ritchie as a start on a library for the state office when it is established. The books were donated in memory of Ms. Ritchie's brother William H. Lemay who was quite interested in the libertarian movement. Many of the books deal with early American history, the Revolution and libertarian ideas.

## WHAT'S NEW?

The Libertarian Campaign Managers Association of Michigan has been formed:

To create a pool of knowledgeable Libertarian campaign managers by recruiting, training and supporting those interested in such a position.

No experience is required - only a desire to see Libertarians run good, solid, professional campaigns.

If you are interested, call Barb Goushaw at (810) 399-9177.

\* \* \*

A Libertarian Advisory Council meeting has been scheduled for Sunday, February 2 at 2 PM at the Pizza Hut Restaurant (basement room), 1640 44th St., Grand Rapids, MI. The Executive Committee will meet at Noon at the same location. For directions, call Dan Marsh, LPM Secretary, at 616-456-9472 or e-mail at dmarsh@iserv.net .

The Libertarian Advisory Council is the legislative body of the LPM and by the bylaws meets in August, November and February if a quorum of 30% of the membership attends. It supplements the legislative power of the Annual Convention. The Executive Committee is made up of the four officers and five at large members who are elected at the convention to administer party matters.

\* \* \*

The Annual Convention of the LPM will be held the weekend of May 2-4, 1997 in Grand Rapids and will be sponsored by the Northwest Michigan Libertarians, Richard Ask, Chair. This group was formed just last year, but has wasted no time in taking responsibility. Looks like a great time!

## MICHIGAN LIBERTARIAN

The Michigan Libertarian is published bi-monthly as the official newsletter of the Libertarian Party of Michigan, 11700 Meriman Rd., Livonia, MI 48150. Telephone 1-800-343-1364 for information. Scheduled publication is January, March, May, July, September and November.

All material contained herein represents the opinion of the author and is not necessarily the position of the Libertarian Party of Michigan.

Articles and letters to the editor should be submitted by the 15th of the month of publication. Text should be typewritten and double-spaced. Unsigned material will not be used. Submissions may be edited.

Advertising is available at \$5.00 per column inch or fraction thereof for camera ready copy.

Submissions to the affiliate news section should be sent directly to the affiliates news editor. All other material should be sent to the editor.

Editor: Keith P. Edwards  
28960 Jane  
St. Clair Shores, MI 48081

Affiliates Editor: Brett Cashman  
1931 Andover  
Ypsilanti, MI 48198  
313-481-1354  
bjcash@aol.com

Circulation: Marnie Edwards & Dave Nagy

---

"Get the facts first. . .you can distort them later."

"Thunder is impressive, but lightning does all the work"

Both by Mark Twain

## ELECTION REVIEW

By Keith Edwards

Michigan Libertarians can take pride in the results of the 1996 election. The Browne-Jorgensen ticket increased our Michigan vote total by 174% over 1992. We retained ballot status with a 70% safety margin. We elected two candidates while several others set LPM records for their offices.

It looks even better when we compare our state to the rest of the country. Michigan has 3.65% of the US population, but gave Browne 5.92% of his national vote. We had the third highest vote total in the country and finished ahead of several states with larger populations, Texas, Florida, New York, Illinois and Ohio. If the rest of the US had done as well as Michigan, Browne would have had 660,000 votes. Or as well as Macomb County, about a million votes.

Some will point out that we got only 51% of our 1980 vote nationally, but that success was due to having a rich VP candidate who paid for our TV ad blitz. The LP came out of that election divided and without a firm strategy in mind.

While the LP grew, Ross Perot faded fast, falling from 19% to 8%, and from 19.7 million vote to 8.7 million. His Reform Party did win major party status, but we can't be sure he'll run again and he will not bank-roll someone else. His appeal is only to the protest vote in the absence of any philosophy or positive program. We need to cut into his protest vote rather than complain about it.

The Browne campaign was our best yet. Harry was elegant and eloquent. He debated Howard Phillips and John Hagelin several times on at least three cable channels and got 2½ and 4½ times as many votes respectively and they were on the ballot in over 40 states. He was treated with far more respect by that part of the media he appeared in than Andre Marrou received four years ago. If the other states were as well organized as

the LPM, the vote would have been higher. I thought 750,000 was a reasonable goal with Perot in the picture. It appears that our base vote has increased from a quarter million to nearly a half million and we could be on a fast-rising curve - if we keep working.

At the National Convention, Harry made the point that libertarians may differ on the destination, but are agreed on the direction. Whether you are a Jeffersonian, Randian or an anarchist, we can work together politically to reduce the state. This paid off with what was a very peaceful campaign internally by libertarian standards, especially in Michigan, and that certainly helped.

The management of the LPM and the National Committee has matured greatly over the past five years and we have gained a lot of very productive people. Things went smoothly in Michigan under the leadership of Emily Salvette with each function being performed with a serious, professional attitude, the best I've seen in our 25 year history.

We still have a way to go. Much of the electorate has not heard our message and we need to reach more people. I don't want to get into the "educate or elect" debate, we need to do both. But at the highschools and colleges I visited this year, the students were more receptive than ever. I spoke at one school as did representatives of the other three national parties and in the subsequent mock election, Harry Browne finished second with 22% of the vote. Bill Clinton got 45%, Dole 19% and Perot 13%. That's where our future is. Youth is inquisitive and idealistic and has 60 years of voting ahead. Senior citizens seldom change.

The future is always uncertain. We do not know what form our victory will take. Will we actually elect enough Libertarians or will another party co-opt our platform as the Democrats did with the socialists? Will CATO etc., persuade the government to

(Continued on page 60)



## ELECTION REVIEW (Continued from page 5)

change on its own? Will we need a second American Revolution?

I have always preferred to focus on PRODUCING MORE LIBERTARIANS so that one of the first three possibilities will occur. We will need to do so if the LP is to win. That is the preferred solution, but whatever the method, there will have to be a lot more of us. Government will have to back down when there are enough of us to shout NO! And the youth are the ones who have no vested interest in social security or in fighting the next undeclared war.

Any election campaign that produces more libertarians, people who THINK libertarian and BE libertarian is a successful campaign. I think this one was a winner.

\* \* \*

## GOOD NEWS

The IRS announced that as of August, a sample of tax returns found that only 12.5% had checked the box designating \$3 per person for the presidential election campaign fund. In fiscal 1978 the figure was 28.9%.

The IRS collected \$1.4 trillion in 1995 and handled over two billion pieces of paper. Commissioner Richardson says the IRS "has more than a passing interest in getting rid of paper." If so, let's just shred the tax laws.



Check out the *LPM*  
on the *World Wide Web*

<http://www.coast.net/~lpm/>

## EBELING SAYS LIBERTARIANS MUST EDUCATE

Professor Richard M. Ebeling urged Libertarians to act individually to educate others in an address at Freedom Hill Hall on February 20. Ebeling, Ludwig von Mises Professor of Economics at Hillsdale College spoke to an audience of 50 under the sponsorship of Libertarians of Macomb County.

Ebeling began with a history of the period of freedom that characterized the late 19th and early 20th centuries, the rise of interventionism in World War I and its decline into totalitarianism. He pointed to the false alternative posed by democratic socialism and totalitarianism as the propaganda tool.

Ebeling identified the freeing of the West German economy by Ludwig Erhard in the late 1940's as the beginning not only of the "German miracle" but also of the retreat from socialism. The European nationalized economies had produced stagnation and led to a loss of confidence in intervention resulting in privatization.

In the United States, the rhetoric of Ronald Reagan helped change the terms of debate, putting intervention on the defense. While Bill Clinton has moved to the center to appease the electorate, the Republicans failed to press their advantage in 1995-96, compromising. Dole campaigned as the savior of the welfare state, revealing the lack of vision in the Republican Party.

Ebeling took Harry Browne to task for not responding to current events in principle, although the professor was not specific as to the issues.

Ebeling said the welfare state is dead intellectually, although Clinton will still push for intervention incrementally while Republicans flounder. Libertarians must act individually to educate others, work to privatize education and stress personal responsibility in issues such as social security. Know your principles and be optimistic, he said.



# Affiliate Report

PAGE 7

## LEADERSHIP CONFERENCE IN THE WORKS

by Stacy Van Oast

A state-wide Leadership Conference is now in the planning stages. In addition to a management and planning seminar, the conference will also feature round-table workshops for officers (chairs, treasurers, etc.) and for committees (membership, newsletter, promotions, etc.). All current affiliate officers, all potential future officers, all activists, and anyone interested is welcome and encouraged to attend. The date is tentatively set for Saturday, February 8. Affiliate officials will be advised as details unfold, so keep in touch with them, or contact Stacy Van Oast (810)784-8783.

### LP OF SHIAWASSEE CO. FORMED

by Ben Steele.

The Libertarian Party of Shiawassee County was formed on October 12 at the home of LP member Nancy Lynn in Bennington. Thirteen people attended, including Jim and Anna McAbee, who came to help assist in the formation of the group.

By-laws were adopted and officers elected. The following people were elected as officers of the LPSC: Ben Steele III, Chair; Violet Steele, Vice-Chair; Max Dollarhite, Secretary; and Sheryl Lynn Pavlica, Treasurer.

"We threw this thing together in kind of a hurry," said Ben, "so there wasn't much time to promote this first meeting, but we expect better turn-outs at future meetings. For the next 18 months, we'll be working tirelessly at building a solid foundation upon which we can run successful campaigns."

Attendees enjoyed a short speech by Max Dollarhite, Libertarian candidate for 85th District State Representative. Max gave an update of his campaign's progress. Max ran in a highly contested

race in which both major party candidates spent well over \$100,000.

Shiawassee County libertarians put a lot of effort into the Dollarhite for State Rep. campaign, which gave them an opportunity to get a lot of information out to the public and generate many contacts. It also gave them an incentive to form the LPSC and build a base of support to make future campaigns even more successful.

"Max got 822 votes," said Violet, "822 Shiawassee and Clinton County voters have said that they want smaller government and more personal responsibility, and they aren't willing to compromise. If every one of those voters shows up at our next meeting, there will be no telling how successful we can be next time!"

Dollarhite is planning to run again in 1998, and the LPSC is planning to run local candidates at every opportunity.

The next meeting of the LPSC is scheduled for Jan. 8, 1997, at 7:30 p.m.. LPSC is looking for a speaker who will draw a good crowd and for a larger hall to hold the meeting in. Anyone who wants more information or has suggestions or contacts for the LPSC can contact Ben Steele III at 517-288-5616 or bsteele1@tir.com.

### JACKSON COUNTY ELECTS OFFICERS

The Jackson Co. Libertarian Party has re-organized and elected new officers. Tom Slaughter has been elected Chairman, Jeff Grund Treasurer, and James Hudler Secretary. The group plans on meeting the 2nd Monday of each month starting December 9. Meetings will be held at Tom's Grill and Pub Restaurant, 3705 Ann Arbor Rd. Jackson MI. (517-764-4210). Located south of I-94 and east of US.-27. Call Tom Slaughter evenings at 517-884-6310 for more information.

## COLLEGE LIBERTARIANS

The student libertarian movement is growing in Michigan. If you would like to form a group in your school, let us know. Call James Hudler at 313-475-9792. We can provide advice on getting started, speakers and perhaps some names of others who might be interested.

|                |                 |              |
|----------------|-----------------|--------------|
| Andrews Univ.  | Glenn Whitt     | 616-471-4186 |
| Hillsdale      | Josh Mercer     | 517-437-5663 |
| Michigan State | Ben Crawford    | 517-332-6813 |
| U of D - Mercy | Dave Collver    | 810-542-9274 |
| Univ of Mich.  | Martin Howrylak | 810-643-6653 |

Michigan State University Libertarians meet on the second and fourth Mondays of the month at the MSU Union Iowa Room at 7:30 PM.

\* \* \*

## LPM MEMBERSHIP REPORT 11/23/96

|                                       |       |
|---------------------------------------|-------|
| Total National members                | 1,021 |
| Michigan members not on National list | 18    |
| Total Michigan members                | 1,039 |
| National donors (non-member)          | 90    |
| Total donors                          | 1,129 |

|                            |        |
|----------------------------|--------|
| Good addresses in database | 15,224 |
|----------------------------|--------|

\* \* \*

## TREASURER'S REPORT 10/14/96

|                    |            |
|--------------------|------------|
| Cash Accounts      | \$7,105.23 |
| Pledges Receivable | 15.00      |
| Inventory          | 268.38     |
| Total Assets       | 7,388.61   |

|                          |          |
|--------------------------|----------|
| Unified LNC & Mich. dues | 350.00   |
| Accounts payable         | 78.00    |
| Due Michigan chapters    | 1,479.13 |
| Local outreach funding   | 181.46   |
| Michigan 16-5            | 1,231.20 |
| Other                    | - 116.36 |
| Total Liabilities        | 3,203.43 |
| Total Equity             | 4,185.18 |

## NATIONAL ELECTION NEWS

WASHINGTON, DC -- Libertarian presidential candidate Harry Browne said today that his vote totals for the 1996 election weren't as large as he had anticipated -- but asserted that the results clarify what the party must do to succeed in the future.

"We have to start tomorrow, building a larger Libertarian Party," he said in a speech at his Tuesday night election party, covered live by C-SPAN. "We have to elevate the party to the next level. We've gone from the crawling stage to the walking stage -- and we're getting ready for the running stage."

With 99% of the vote counted, Browne had received approximately 463,000 votes, or just about .5% of all the popular votes cast -- making his effort the second most successful presidential campaign in Libertarian Party history. Browne's vote totals rank behind only 1980 presidential candidate Ed Clark, who won 921,000 votes.

Browne's vote also represents a 63% increase in votes over the party's 1992 totals, when LP candidate Andre Marrou received 291,000 votes. But the numbers disappointed Browne's campaign staff, who had hoped that Browne's unprecedented onslaught of talk radio appearances and TV, radio, and newspaper ads -- as well as his popular book, *Why Government Doesn't Work* -- would push the vote totals higher.

"I think we ran the best \$3 million presidential campaign you can run, with the best presidential candidate," said Sharon Ayres, Browne's campaign manager. "But we've run up against the limits of what's possible with a \$3 million campaign. If we're going to compete more



(National election news cont.)

successfully in the year 2000, we're going to need a lot more members, more resources, and more money." Browne agreed that a lack of money -- compared to Clinton, Dole, and Perot -- had restricted his ability to reach enough voters enough times to persuade them to vote for him.

"You are only going to get the really hard-core [supporters] unless you get an enormous amount of media coverage -- so people can hear our message several times," he said. "[Most] people had no way of knowing about our message. We had tremendous exposure through talk radio, but that's just a fraction of the voting public."

The "Perot Factor" also played a role in the lower-than-expected vote totals, said Ayres. "Just as in 1992, we were up against the Perot factor," she said. "We faced a well-financed billionaire who echoed the Libertarian Party's critique of the fiscal irresponsibility of the Republicans and Democrats -- but who had \$30 million to publicize himself. Obviously, Perot picked up a lot of the generic protest vote." Perot got 8% of the vote (about 7.8 million votes), spending \$30 million in federal campaign funds on his campaign.

"Since Perot got enough votes to continue to receive federal funding in 2000, we have to take that into account as we plan for the future," said Ayres. "That's reality. We can't complain about it -- we have to work harder to overcome it." Ayres also noted that the ballot was cluttered this year with a large number of other "third-party" candidates for president -- further diluting the anti-Republican, anti-Democratic vote.

Browne beat most of the third-party challengers, including Howard Phillips of the U.S. Taxpayer's Party (who got just 178,000 votes) and John Hagelin of the Natural Law Party (109,000 votes). However, a last-minute vote surge in California pushed the highly publicized Ralph Nader, the candidate for the Green Party, past Browne in popular votes. Nader ended with about 577,000 votes.

Browne dismissed the lasting significance of the Nader votes. "He's not a permanent factor in politics," said Browne of the quirky candidate who capitalized on his name recognition, but refused to actually join or promote the Green Party. Browne also noted that the presidential race had been called by the time California voters went to the polls, so many Clinton supporters cast meaningless protest votes for Nader.

Overall, however, Browne said several positive things had been accomplished by his campaign. "We have opened the door this year," he said. "Finally this year, people are recognizing that there is a Libertarian alternative. We have doubled the party's membership in just the past two years. And thanks to this campaign, everyone in politics and the media knows who we are and what we stand for.

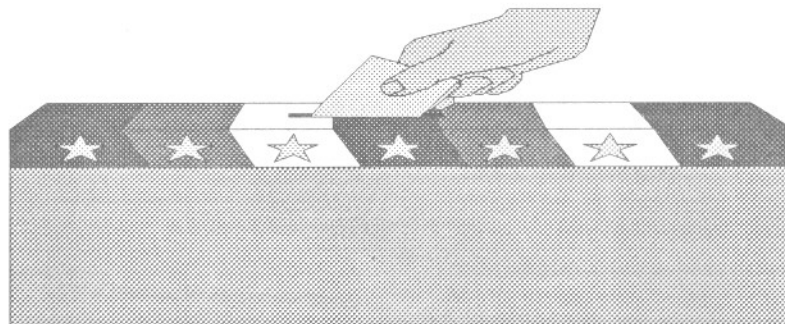
"There is nothing wrong with our message or the way we're promoting it. We simply need to have it heard by more people between now and the next election. The American people are looking for solutions that don't involve more government, don't involve more tax money, and don't involve more violations of the Bill of Rights," he said.

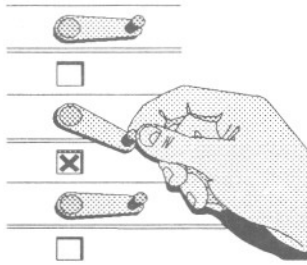
But Browne returned to the central lesson he said he learned from the campaign. "We have to build a party that is so big that in 2000, they can't keep us out of the debates," he said. "We can create the circumstances that will make it possible for us to be in the thick of things in 2000." To accomplish that goal, Browne said he would "speak out for the party wherever possible -- appearing on talk radio, television, and in print -- letting people know there is hope for America."

Libertarian Party National Director Perry Willis said the party is taking immediate steps to prepare for 2000. For the next four years, we plan to spend the bulk of our resources on membership recruitment -- which is a change from the past, when we've had to spend most of our money on ballot access," he said. "This election is a wake-up call: We need to do better, we need to be bigger. Let's start today."

## MICHIGAN ELECTION RESULTS CONTINUED.

|                       |     |                                |      |            |            |              |
|-----------------------|-----|--------------------------------|------|------------|------------|--------------|
| RICHARD FROST         | 47  | STATE REP                      | GEN  |            | 984        | 2.5%         |
| JOE SMOLINSKI         | 50  | STATE REP                      | GEN  |            | 573        | 1.6%         |
| MICHAEL WIRICK        | 54  | STATE REP                      | WAS  |            | 710        | 2.6%         |
| EDWARD WALLACE        | 66  | STATE REP                      | LIV  |            | 1578       | 3.9%         |
| MIKE BRINKMAN         | 70  | STATE REP                      | ING  |            | 1037       | 3.6%         |
| THOMAS BAKER          | 78  | STATE REP                      | BER  |            | 971        | 3.4%         |
| MAX DOLLARHITE        | 85  | STATE REP                      | SHI  |            | 822        | 2.5%         |
| LESLIE ELLISON        | 108 | STATE REP                      | U.P. |            | 440        | 1.2%         |
| JER. PEIRRE-TRETTEL   | 109 | STATE REP                      | U.P. |            | 400        | 1.3%         |
| ROBERT BLACK          | 110 | STATE REP                      | U.P. |            | 744        | 2.1%         |
| JAMES KUHN            | 2   | COUNTY COMMISSIONER            |      | BER        | 494        | 13.5%        |
| RICHARD WHITELOCK     | 4   | COUNTY COMMISSIONER            |      | ION        | 200        | 10.8%        |
| WILLIAM BARTELT       | 5   | COUNTY COMMISSIONER            |      | ION        | 59         | 2.9%         |
| WILLIAM WARNER        | 8   | COUNTY COMMISSIONER            |      | ION        | 144        | 8.2%         |
| GLENN BARR            | 10  | COUNTY COMMISSIONER            |      | KEN        | 501        | 4.0%         |
| STEVE BUTLER          | 18  | COUNTY COMMISSIONER            |      | KEN        | 279        | 2.8%         |
| TODD GREENE           | 15  | COUNTY COMMISSIONER            |      | KEN        | 247        | 3.9%         |
| DAN MARSH             | 17  | COUNTY COMMISSIONER            |      | KEN        | 141        | 2.4%         |
| GREGORY PATTOK        | 11  | COUNTY COMMISSIONER            |      | KEN        | 248        | 2.2%         |
| STEVE WARREN          |     | SHERIFF                        |      | KEN        | 6427       | 3.1%         |
| JEROLD COON           |     | PROSECUTOR                     |      | KAL        | 156        | 2.8%         |
| MIKE WOODALL          |     | ARCADIA TWP. TRUSTEE           |      | LAP        | 111        | 6.7%         |
| BART TINDER           |     | SHERIFF                        |      | LEN        | 1253       | 3.7%         |
| <b>BRIAN WISNESKI</b> |     | <b>CLINTON TWP TRUSTEE</b>     |      | <b>LEN</b> | <b>279</b> | <b>46.6%</b> |
| RICHARD SAMUL         |     | COUNTY CLERK                   |      | LIV        | 3889       | 10.1%        |
| MATTHEW DICKINSON     |     | HAMBURG TWP TRUSTEE            |      | LIV        | 962        | 20.8%        |
| DENNIS JACQUES II     |     | COUNTY CLERK                   |      | MAC        | 9511       | 3.5%         |
| RONALD BURCHAM        | 4   | COUNTY COMMISSIONER            |      | MAC        | 308        | 2.7%         |
| LAUREL PIETRANGELO    | 6   | COUNTY COMMISSIONER            |      | MAC        | 218        | 2.0%         |
| PAUL SOYK             | 7   | COUNTY COMMISSIONER            |      | MAC        | 329        | 2.6%         |
| RUSSELL KOHLER        | 11  | COUNTY COMMISSIONER            |      | MAC        | 425        | 3.9%         |
| JAMES MCABEE          | 13  | COUNTY COMMISSIONER            |      | MAC        | 489        | 4.1%         |
| MARK HEIL             | 18  | COUNTY COMMISSIONER            |      | MAC        | 323        | 3.2%         |
| BILL CARVER           | 21  | COUNTY COMMISSIONER            |      | MAC        | 469        | 4.3%         |
| JEFFREY TERHAAR       | 7   | COUNTY COMMISSIONER            |      | OTT        | 931        | 15.5%        |
| RUSS SMITH            | 13  | COUNTY COMMISSIONER            |      | OTT        | 615        | 12.0%        |
| <b>BRETT CASHMAN</b>  |     | <b>SUPERIOR TWP PARK COMM.</b> |      | <b>WAS</b> | <b>925</b> | <b>47.6%</b> |
| JAMES HUDLER          |     | SYLVAN TWP TRUSTEE             |      | WAS        | 387        | 20.8%        |
| GEOFFREY FOSTER       |     | YPSILANTI TWP TRUSTEE          |      | WAS        | 2567       | 24.1%        |
| KERRY SMITH           | 9   | COUNTY COMMISSIONER            |      | WAY        | 1977       | 3.9%         |





# MICHIGAN ELECTION RESULTS

The following results are courtesy of the hard and diligent work of State Party Chair, Emily Salvette. The "final" results will not be available until the respective election bureaus release their final tabulations (probably late November). Please excuse any errors or omissions. Winners are highlighted, balance of power in italics.

| NAME                      | DIST/OFFICE                 | CNTY | VOTES  | %     |
|---------------------------|-----------------------------|------|--------|-------|
| HARRY BROWNE/JO JORGENSEN | PRESIDENT / VICE PRESIDENT  |      | 27980  | 0.7%  |
| KENNETH PROCTOR           | US SENATE                   |      | 37514  | 1.0%  |
| DAVID RAAFLAUB            | MICHIGAN SUPREME COURT      |      | 87049  | 3.4%  |
| JERRY KAUFMAN             | MICHIGAN SUPREME COURT      |      | 315794 | 12.2% |
| DIANE BARNES              | STATE BOARD OF EDUCATION    |      | 154173 | 4.7%  |
| BARBARA GOUSHAW           | STATE BOARD OF EDUCATION    |      | 98691  | 3.0%  |
| CALVIN MATLE              | REGENT OF THE U OF MICHIGAN |      | 86522  | 2.7%  |
| <i>WILLIAM HALL</i>       | REGENT OF THE U OF MICHIGAN |      | 119492 | 3.8%  |
| MICHAEL MILLER            | TRUSTEE OF MICHIGAN STATE   |      | 111077 | 3.5%  |
| BRIAN KLUESNER            | TRUSTEE OF MICHIGAN STATE   |      | 82633  | 2.6%  |
| THOMAS JONES              | GOVERNOR OF WAYNE STATE     |      | 91862  | 3.0%  |
| STACY VAN OAST            | GOVERNOR OF WAYNE STATE     |      | 107457 | 3.5%  |
| MICHAEL OLENICZAK         | 1 US CONGRESS GTV           |      | 2828   | 1.1%  |
| BRUCE SMITH               | 2 US CONGRESS ALL           |      | 3053   | 1.2%  |
| ERWIN HAAS                | 3 US CONGRESS KEN           |      | 2993   | 1.2%  |
| BEN STEELE III            | 4 US CONGRESS SHI           |      | 2400   | 1.0%  |
| MARK OWEN                 | 5 US CONGRESS CAL           |      | 2903   | 1.3%  |
| SCOTT BEAVERS             | 6 US CONGRESS BER           |      | 3378   | 1.6%  |
| ROBERT BRODA              | 7 US CONGRESS ING           |      | 2983   | 1.4%  |
| DOUGLAS MACDONALD         | 8 US CONGRESS LIV           |      | 3810   | 1.5%  |
| MALCOLM JOHNSON           | 9 US CONGRESS LAP           |      | 3464   | 1.5%  |
| STUART SCOTT              | 10 US CONGRESS MAC          |      | 3946   | 1.6%  |
| DICK GACH                 | 11 US CONGRESS OAK          |      | 5061   | 1.8%  |
| ALBERT TITRAN             | 12 US CONGRESS MAC          |      | 3323   | 1.4%  |
| JAMES MONTGOMERY          | 13 US CONGRESS WAS          |      | 3070   | 1.5%  |
| SCOTT BOMAN               | 14 US CONGRESS WAY          |      | 1692   | 0.9%  |
| RAYMOND WARNER            | 15 US CONGRESS WAY          |      | 1357   | 0.8%  |
| BRUCE CAIN                | 16 US CONGRESS WAY          |      | 3131   | 1.4%  |
| PAUL KANE                 | 15 STATE REP WAY            |      | 1560   | 4.1%  |
| JOHN TATAR                | 19 STATE REP WAY            |      | 1259   | 3.4%  |
| BRAD TIDIK                | 23 STATE REP WAY            |      | 614    | 1.7%  |
| JON COON                  | 24 STATE REP WAY            |      | 4942   | 15.4% |
| LOEL GNADT                | 25 STATE REP WAY            |      | 864    | 3.2%  |
| KEITH EDWARDS             | 26 STATE REP MAC            |      | 863    | 2.2%  |
| THOMAS SYDLOW             | 27 STATE REP MAC            |      | 963    | 3.0%  |
| MATTHEW IGNASH            | 29 STATE REP MAC            |      | 645    | 1.7%  |
| ROBERT VAN OAST           | 32 STATE REP MAC            |      | 807    | 2.0%  |

# Libertarian Party Membership Application

NOVEMBER-DECEMBER, 1996

- \$35 Yes, I want to join the LP on all 3 levels - National, Michigan and \_\_\_\_\_ County
- \$10 I already belong to the state and national party, now I want to join the \_\_\_\_\_ County chapter
- \$25 I've already joined my local chapter, now I'd like to join the Michigan and National LP
- \$15 I need more information, please continue to send the *Michigan Libertarian* newsletter for one year
- \$ \_\_\_\_\_ Additional contribution to the Libertarian Party of Michigan
- I want to join the monthly pledge program, please send me the registration material

**Note:** All state and national memberships include a subscription to the national *Libertarian Party News* and the *Michigan Libertarian*. Local memberships may include a local newsletter.

**GOVERNMENT MANDATED NOTICES:** The United States Postal Service requires that we notify you that the cost of newsletter subscriptions (\$25 National, \$15 Michigan) are included in your membership dues. The Internal Revenue Service requires that we print "contributions are not tax-deductible".

**SEND TO: Libertarian Party of Michigan, 11700 Merriman Rd., Livonia MI 48150**

- Check or Money Order Enclosed, made payable to: **The Libertarian Party of Michigan**
- Bill My Visa or Master Card Account #: \_\_\_\_\_ Exp. \_\_\_/\_\_\_/\_\_\_

Charge Card Signature: \_\_\_\_\_

## Please Print!

Name: \_\_\_\_\_

Address: \_\_\_\_\_ County: \_\_\_\_\_

City: \_\_\_\_\_ State: \_\_\_\_\_ Zip: \_\_\_\_\_ E-Mail: \_\_\_\_\_

Telephone: Day (\_\_\_\_\_) \_\_\_\_\_ Evening (\_\_\_\_\_) \_\_\_\_\_ Fax (\_\_\_\_\_) \_\_\_\_\_

Applicants for membership must indicate concurrence with the following statement by signing below:

"I hereby certify that I do not believe in or advocate the initiation of force as a means of achieving political or social goals."  
*This statement does not preclude self-defense or resistance to tyranny.*

Signature: \_\_\_\_\_ Date: \_\_\_\_\_



**Michigan Libertarian**  
11700 MERRIMAN RD  
LIVONIA MI 48150

NONPROFIT ORGANIZATION  
U. S. POSTAGE PAID  
TROY, MI  
PERMIT # 346

FORWARD &  
ADDRESS CORRECTION